



Burnham & District Dog Training Club

AGILITY GOLD, SILVER and BRONZE AWARDS

Members can gain Bronze, Silver and Gold Awards by successfully completing the tests described. Each Award consists of five tests – once you've achieved the bronze award you can then move onto the silver award and the gold.

The tests will be carried out periodically at the normal training sessions but on the day of the tests no practising of the tests will be allowed beforehand.

Members can take the tests in any order within the Bronze, / Silver, but can't take the Gold Award tests until the Bronze has been passed. However, before gaining the Silver, the Member must firstly gain the Bronze (by completing all five Bronze tests) and similarly, before gaining the Gold, the Member must have gained both the Bronze and Silver awards.

There is no set timescale to the tests so they can be taken over any reasonable amount of time.

On the day, you will only have one chance to successfully complete any test but if you fail then the test can be re-taken at a later date.

The tests are to be completed with only "minor" deviation between obstacles.

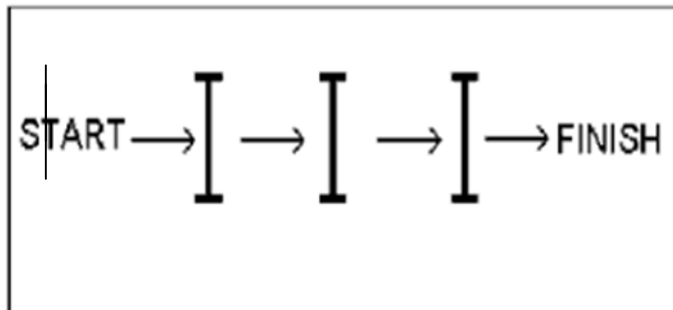
The jumps will be set at 1' 3" for Bronze, 2' 0" for Silver and 2' 6" for Gold - all with a single pole only. Mini and Midi dogs will have the height suitably reduced.

The tests are designed to provide members with an idea of how well they are progressing. They are not compulsory and even though many of the tests are intended to simulate proper Agility competition, it is hoped that everyone will participate whether they wish to enter competitions or not.

BRONZE AWARD

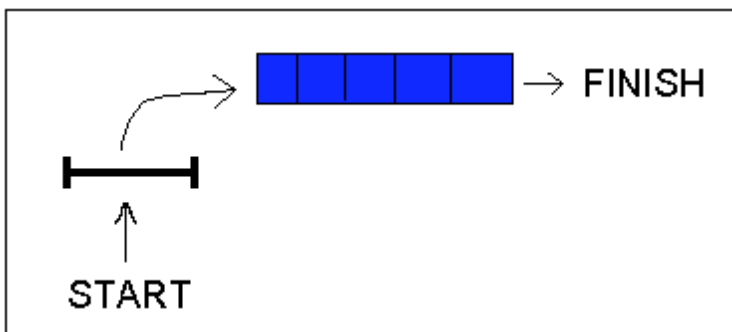
Bronze Test 1. Straight line course of three jumps.

Dog to tackle three jumps set in a straight line in a continuous manner with the handler "running" alongside - either left or right hand side of dog.



Bronze Test 2. Jump and then onto a further obstacle.

Dog may be put in a stay in sit or stand on the start line. The handler can then do a recall over the jump or run along side the dog sending it over the jump and immediately onto and through the tunnel that will be set at right angles to the jump.

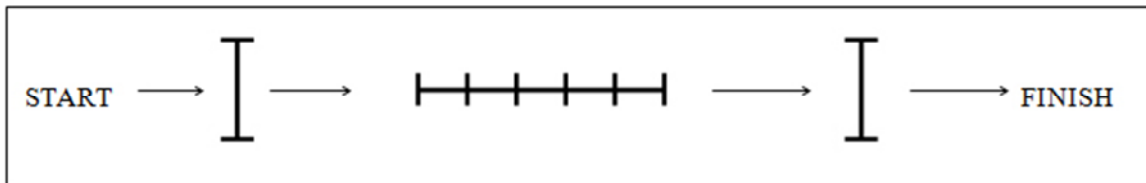


Bronze Test 3. Straight line course – Jumps and 6 weave poles.

Dog to start in front of the first jump and then do the (8) weave poles. The weave poles are to be negotiated and then the final jump. The handler may work on ever the left or the right side.

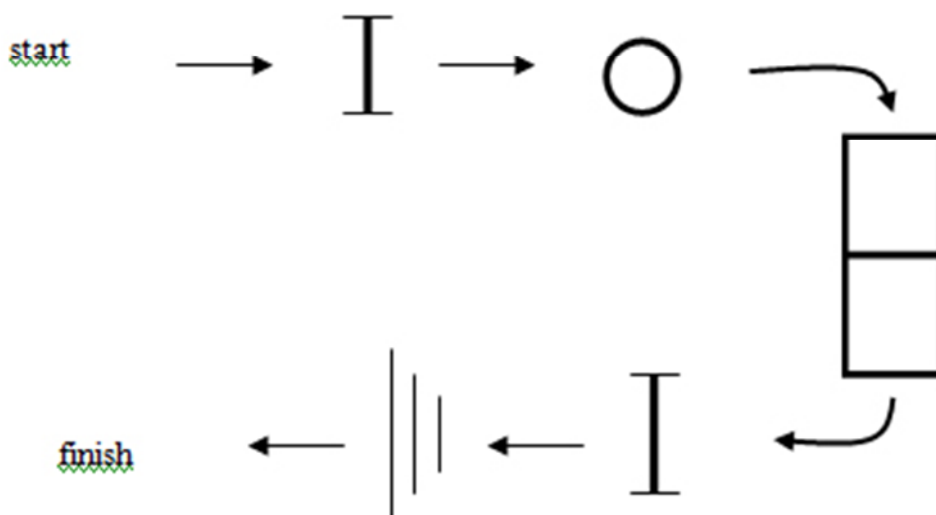
The "training" weave poles can be used if desired all 12 poles - set at 8" apart. Bronze Test 4. Left handed Horse shoe test.

Dog to go over the jump through the tyre turn right and across the "A" frame right again over jump and finally over the long jump. The dog is to be on the handlers left at all times.



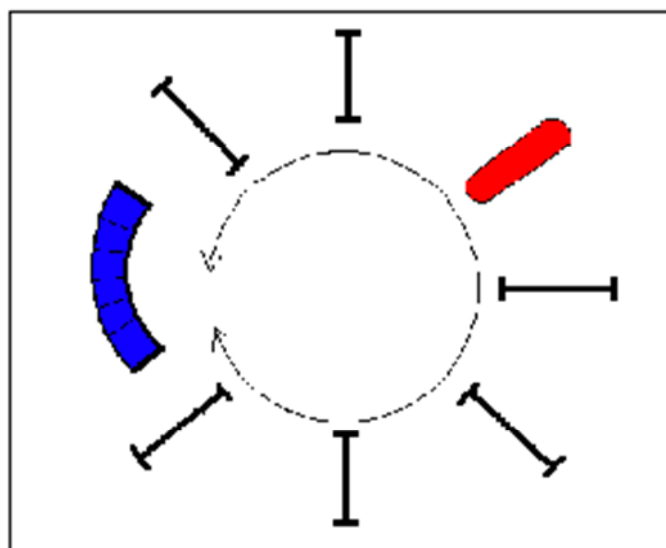
Bronze Test 4. Left handed Horse shoe test.

Dog to go over the jump through the tyre turn right and across the "A" frame right again over jump and finally over the long jump. The dog is to be on the handlers left at all times.



Bronze Test 5.Circle of jumps

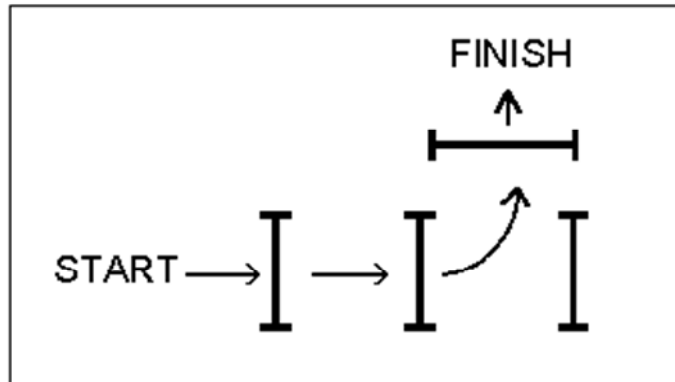
Jumps and pipe tunnel to be set in a circle along with the wall. Dog to start in the gap and then to negotiate the course in either direction. Once they return to the gap they must change direction and go back around the course in the opposite direction. (negotiating each obstacle a second time) finishing at the start point.



SILVER AWARD

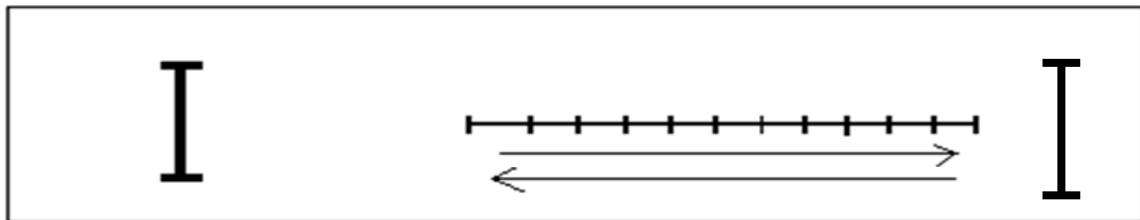
Silver Test 1. Recall over two jumps and then onto a third.

Dog to start at Starting Line with handler positioned somewhere beyond the line of the second jump (either directly behind or to one side). A third jump will be set in the same line but this is **NOT** to be jumped. Dog then to be called over the first two jumps and then directed left or right over a further jump set at a right angle.



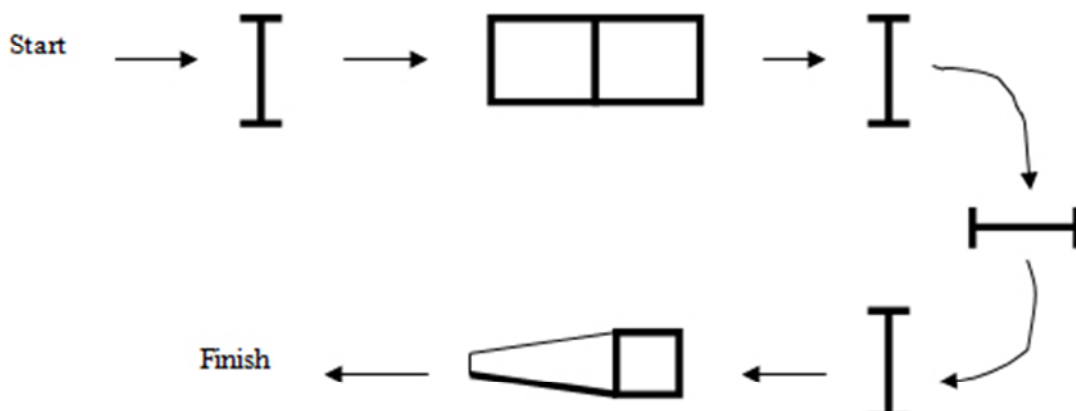
Silver Test 2. Weave Poles.

Weave poles (12) to be completed - once with the handler on the left and once with the handler on the right of the dog. A jump can be introduced at the start and end of the exercise if the handler wishes but any "faults" on the jumps will not count. The "training" weave poles can be used but will be set at no more than 2" apart.



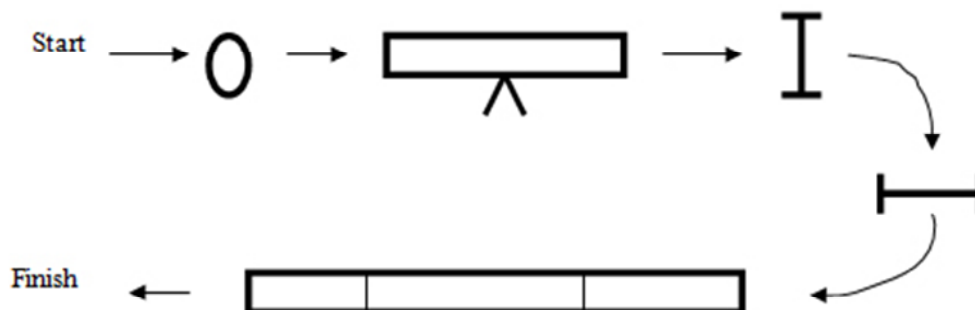
Silver Test 3. Part course handler changing sides.

Handler to start with dog on their right and send dog over first Jump The handler must then change sides when desired to pass the test. After the first jump dog to negotiate the A frame the next jump turn right and over the jump turn right again over the next jump and through the flat tunnel.



Silver Test 4. Touch Points.

Dog to start at Starting Line on the right of handler and then tackle a "mini" course which will consist of the tyre, see-saw, jump then turn right to next jump turning right again across the dog walk to finish.



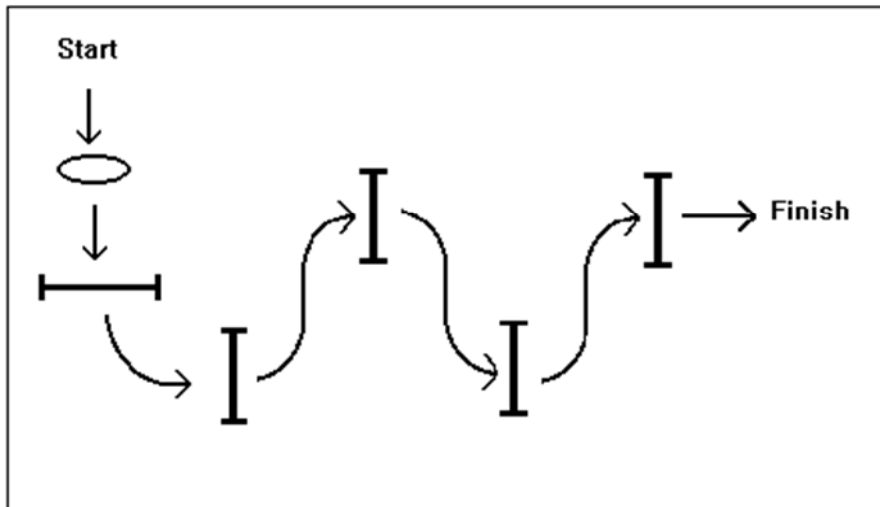
Silver Test 5. Complete Course.

Dog to tackle a complete course roughly equivalent to an Elementary Agility competition course. All the usual obstacles will be set out in relatively straight lines but will necessitate the handler to work the dog on the left and right hand sides. "Competition" marking will be applied including a course time. Up to 10 faults will be permissible.

GOLD AWARD

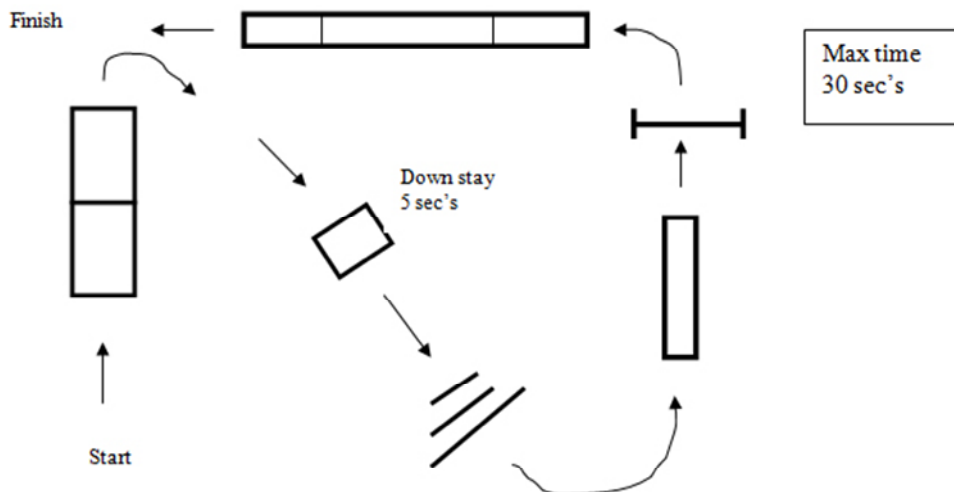
Gold Test 1. Tyre and zig-zag jumps.

Start with tyre then onto two jumps - the second on to be set at an angle - then onto a further zig-zag of jumps the last jump to be a wall.



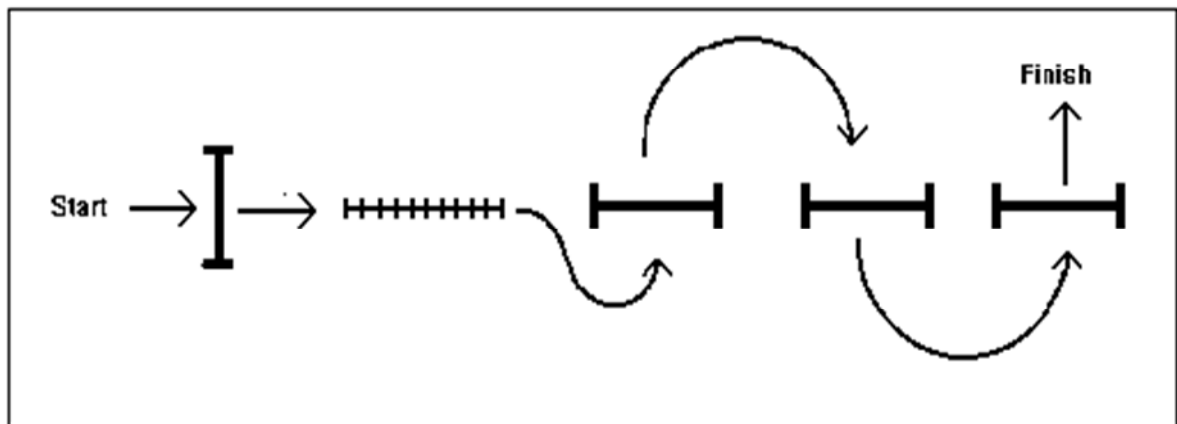
Gold Test 2. A frame , Dog Walk and See Saw.

Dog to tackle the A frame, then to turn right diagonally onto the table for a five second down stay continue over the long jump turning left over the see-saw over the next jump turning left again and along the dog walk.



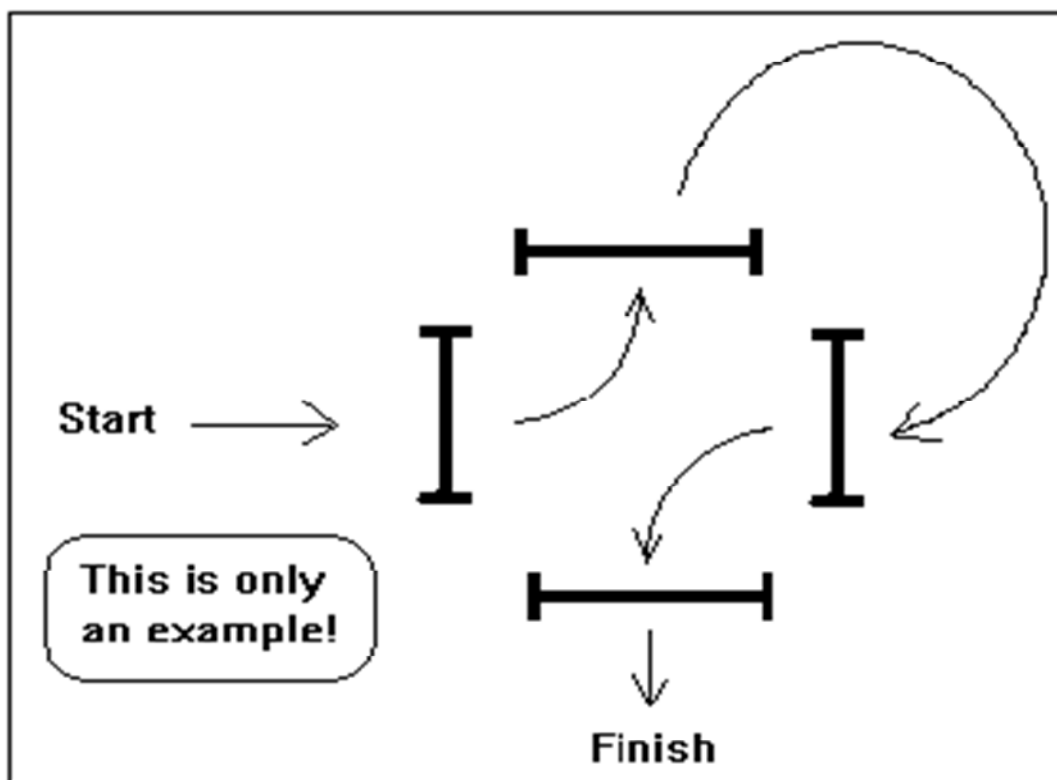
Gold Test 3. Weave Poles and slalom of jumps.

After the jump the handler must send the dog on to the weaves i.e. the dog must be in **FRONT** of the handler when it first enters the weaves poles. Then onto the slalom of jumps which may be done with the dog jumping the slalom starting from the left or right of the jump. The "training" weave poles cannot be used.



Gold Test 4. Box jumps

Five jumps will be positioned in a box. Each will have to be jumped in the correct sequence, which will be determined on the day.



Gold Test 5. Complete Course

Dog to tackle a complete course roughly equivalent to a Novice Agility competition course with all the usual obstacles. "Competition" marking will be applied and a course time will be set. Only up to five faults will be allowed.